

SAGAR  
LIFESTYLE  
TOWERS

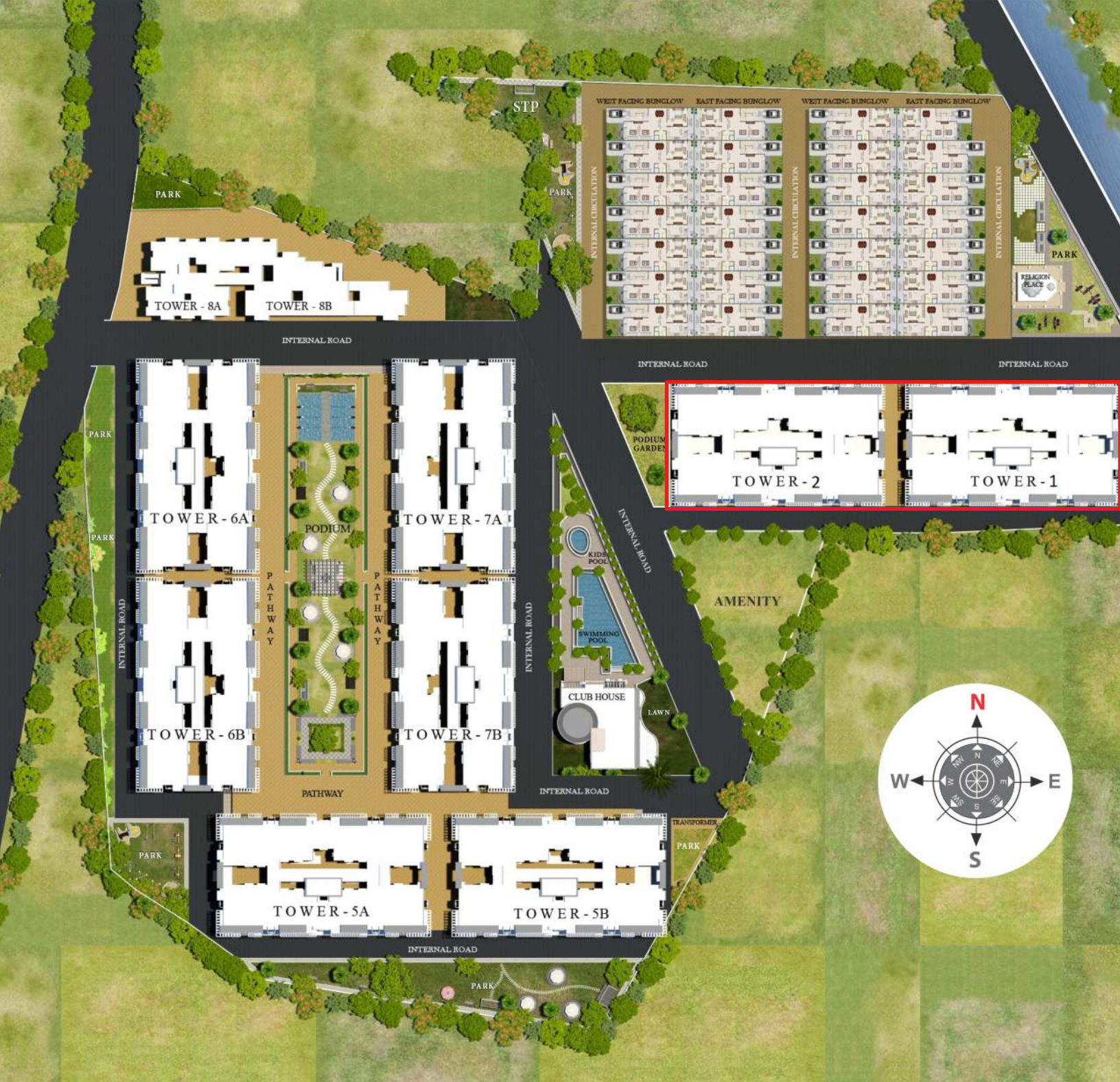
E-8 Extension

RERA REG. NO: P-BPL-17-043

ALL OF THIS, UNDER  
**ENDLESS SKIES**  
AND AMONG  
**VAST GREENS**

સુલો 1&2





## Welcome to Sagar Lifestyle Towers! A township comprising of 468 Luxurious Apartments to suit your lifestyle.

As one of the most trusted names in Real Estate, Agrawal Builders and Colonisers bring you the development of Sagar Lifestyle Towers – a truly iconic project that suits your lifestyle in Luxury Living. Say hello to luxury living which is full of life – independent, stylish, well-designed, green landscapes with modern amenities and above all a win investment in 7.3 acres campus. Welcome to Sagar Lifestyle Towers to enjoy life to the fullest where the homes and apartments created to suit your lifestyle. A club house to verdant greens, ample natural light, fresh air and above all happy families in neighbourhood of 468 prestigious 2/3 BHK Luxurious Apartments create style, statement, comfort and aesthetics for you. The proximity to malls, schools, colleges, offices, hospitals and proposed nearby metro station brings a whole new meaning to life. Enjoy Life @ Sagar Lifestyle Towers!



EDUCATION • REAL ESTATE • INDUSTRY  
• HEALTH CARE

[www.thesagar.in](http://www.thesagar.in)

## THE SUCCESS SAGA

Sagar Group is a leading business conglomerate of Central India operating in the real estate, education and industry sectors. It is one of the most diversified group of Central India realising the vision to contribute to the basic needs of individuals with a strong presence for 40 years. The Group is an integral part of the success Saga of individuals who have been associated with them. Today, Sagar Group works with a mission to 'Build Nation' and is committed to its quality, performance, culture and transparency rising each minute with people connected to Impact lives of over 2 lakhs+ people each day. The Group is headquartered at Bhopal and employs over 5000+ people in all its entities.

### 7° 1 3y-ê

Sagar Group of Institutions: - 20000+ students - 2000+ faculties - 9 campuses

Sagar Public School – Saket Nagar, Gandhi Nagar, Rohit Nagar, Ratibad, Katara Extension, and Dwarka Dham. Sagar Institute of Science & Technology (SISTec – Engg/Pharm/MBA) – Gandhi Nagar & Ratibad Campuses

### Ė° 1 šŷA

Sagar Manufacturers Pvt Ltd – Manufacturers & Exporters of Cotton Yarn / Cotton Raw Fabric to over 20+ countries.

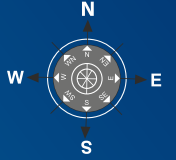
Sagar Nutriments Pvt Ltd - Fully automated most advanced rice milling unit of Central India providing satisfaction in each grain with the brand – Sagar Rice!

### qzB, 7šŷŷz

Agrawal Builders & Colonisers, the most trusted name since 40 years in creating and providing state-of-the-art residential homes. The smile, satisfaction and trust of 8500+ happy families reflect its strength by fulfilling their dreams of a happy home in its projects.

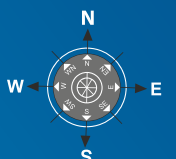
NURTURING RELATIONSHIPS  
WITH **HAPPY FAMILIES**  
FOR **40 YEARS!**

# TOWER 2 UPPER GROUND FLOOR PLAN



## PODIUM FLOOR FLATS WITH EXTRA TERRACE SPACE

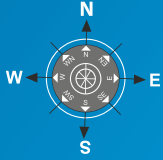
# TOWER 2 UPPER GROUND FLOOR PLAN



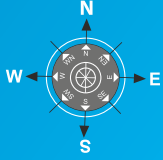
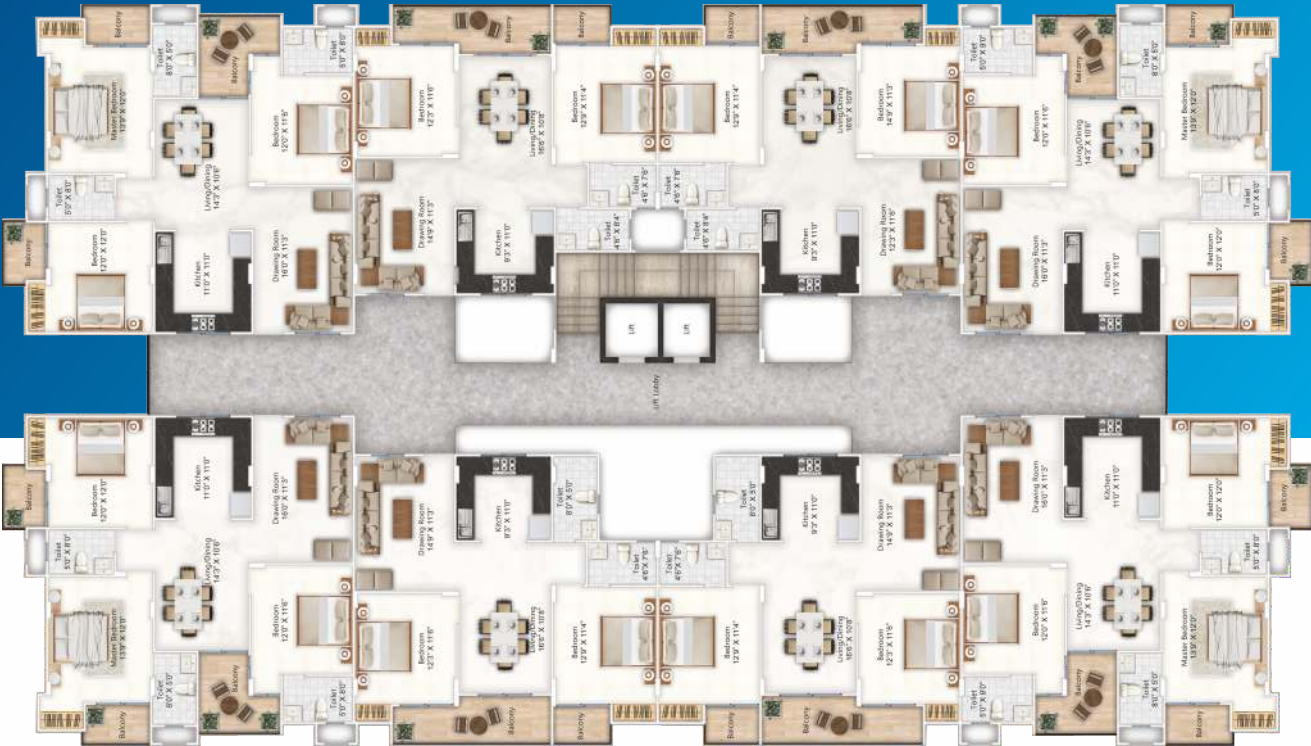
**PODIUM GARDEN**

## PODIUM FLOOR FLATS WITH EXTRA TERRACE SPACE

# TOWER 1 TYPICAL FLOOR PLAN



# TOWER 2 TYPICAL FLOOR PLAN

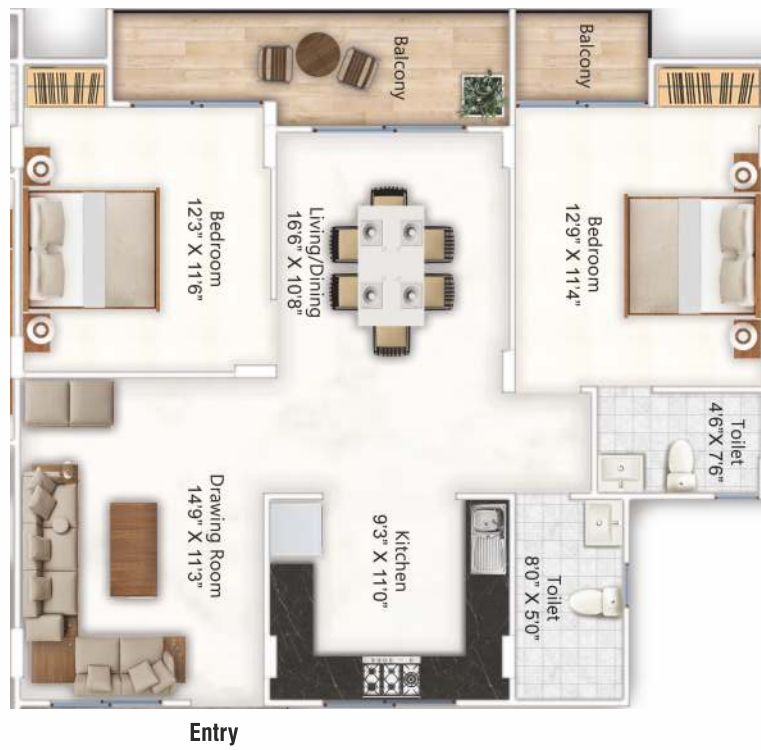


**PODIUM GARDEN**

**2 BHK FLATS 1500 SQ FT**  
UPPER GROUND FLOOR



**2 BHK FLATS 1424 SQ FT**  
TYPICAL FLOOR



**2 BHK FLATS 1500 SQ FT**  
UPPER GROUND FLOOR



Entry

**2 BHK FLATS 1424 SQ FT**  
TYPICAL FLOOR



Entry

**3 BHK FLATS 1850 SQ FT**  
UPPER GROUND FLOOR



**3 BHK FLATS 1790 SQ FT**  
TYPICAL FLOOR





**3 BHK FLATS 1850 SQ FT**  
UPPER GROUND FLOOR



Entry

**3 BHK FLATS 1790 SQ FT**  
TYPICAL FLOOR



Entry

# SPECIFICATIONS

Structure	:	R.C.C. frame structure of M-20 grade.
Walls	:	Made of first-class quality Red Ghol Bricks.
Floors	:	Premium quality of Vitrified tiles flooring in hall, bedrooms & kitchen.
Staircase	:	Granite flooring in staircase with SS (Stainless steel) railing.
Doors	:	Designer laminated flush doors with pressed steel section frame.
Windows	:	Powder-coated aluminium sliding windows.
Toilets	:	Tiles flooring and ceramic/glazed tiles up to door height on all walls. Best quality sanitary wares and CP fittings.
Kitchen	:	Black granite platform with glazed tiles dadoes over the platform. Steel sink and provision for Aqua guard point.
Water Supply	:	Through concealed pipeline from an overhead tank of each building.
Electrical	:	Concealed PVC pipes with copper wiring and switches of standard make and A.C. point in all bedrooms.
Wall Finish & Painting	:	Internal - OBD, External - ACE Exterior.
Lifts	:	Two branded lifts in each tower with power back-up.
Landscaping	:	Planned landscaping with more than 70% open area.





**Lush green gardens**



**Vastu Compliant layouts**



**Mega Entrance Gate**



**24/7 Security Guard**



**Podium Garden**



**Garden Sitout**



**Secured campus**



**Gymnasium**



**Temple**



**CCTV**



**Kids Zone**



**Library**



**Swimming Pool**



**Table Tennis**



**Innovative Terrace**



**Modern STP Plant**

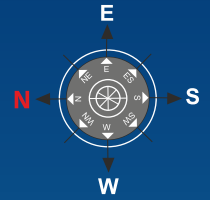


**24/7 Water Supply**

# AMENITIES

# LOCATION PLAN

Site Address: E-8, Extension, Near Aakriti Eco City, Rohit Nagar, Bhopal



EDUCATION • REAL ESTATE • INDUSTRY  
• HEALTH CARE

[www.thesagar.in](http://www.thesagar.in)

ONE OF THE FASTEST GROWING BUSINESS CONGLOMERATES OF CENTRAL INDIA



• Saket Nagar  
• Gandhi Nagar  
• Rohit Nagar  
• Pratibad  
• Kattara Extension  
• Dwarka Dham



All Schools Affiliated to CBSE | [www.spsbhopal.ac.in](http://www.spsbhopal.ac.in) | [www.sistec.ac.in](http://www.sistec.ac.in)

**SAGAR GROUP OF INSTITUTIONS®**

• Engineering • Pharmacy • Management • Public Schools

Biggest educational group of central India with 20000+ students & 2000+ staff members.

**SAGAR YARN™**  
A Product of  
**Sagar Manufacturers Pvt. Ltd.™**

Most modern textile industry of central India, exporting to 20+ countries across the world.

[www.sagarmanufacturers.com](http://www.sagarmanufacturers.com)



Eat healthy, live healthy.  
Premium quality Rice from most modern milling facility of Sagar Group.

[www.sagarrice.com](http://www.sagarrice.com)



CSR initiative of Sagar Group.



BUILDERS • PROMOTERS • COLONISERS  
[www.agrawalbuilders.com](http://www.agrawalbuilders.com)

INFRASTRUCTURE DEVELOPMENT COMPANY  
OF SAGAR GROUP SINCE 1983

The Sagar: E-2/4, Arera Colony, Opp. Rani Kamlapati Railway Station, Bhopal  
Ph: 0755-2460107, 2460108, 407797 | Email: [agrawalbuilders@thesagar.in](mailto:agrawalbuilders@thesagar.in)

DISCLAIMER - In the interest of the continual developments in design and quality of construction, the Developer reserves all rights to make any changes in the scheme, including technical specifications, designs, planning and layout in any stage and all the purchasers shall abide by such changes. Changes/alterations of any nature, including the elevations, exterior colour scheme of the apartments or any other change affecting the overall design concept & outlook of the scheme are strictly NOT PERMITTED during or after the completion of the scheme. The brochure is intended only to convey the essential design & technical features of the scheme & shall not be construed to form part of the legal document.

