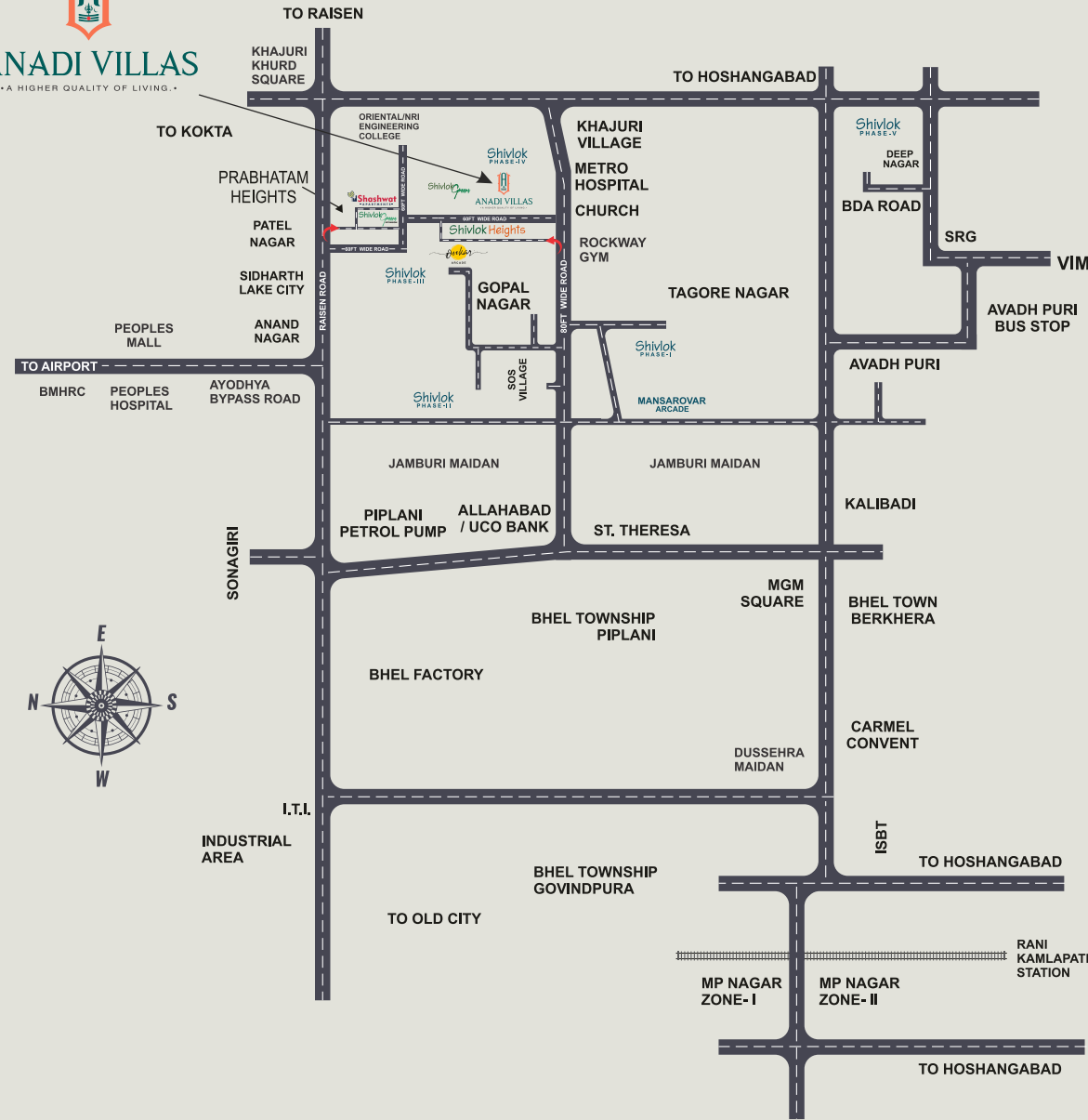




LOCATION PLAN



PROJECT APPROVED BY



📍 **Site Office** - Shivlok Greens, Near SOS Balgram, Khajuri Kalan, Piplani, Bhopal (M.P.)

📍 **Admin Office** - S-2, Gomati Villa, 273, Zone-II MP Nagar, Bhopal (M.P.)

📞 **Contact** : 9926004433, 9926003766, 7722952636

✉️ draupadiconstructions@gmail.com 🌐 www.draupadiconstructions.co.in

📱 /DraupadiConstructions

Member of
CREDAI



P-BPL-22-3274



ANADI VILLAS

• A HIGHER QUALITY OF LIVING. •




ANADI VILLAS
• A HIGHER QUALITY OF LIVING. •



आपका सुख ही अपना, हमारा कष्ट ही प्रयाग

FEATURES & AMENITIES


300+
 FAMILIES
 RESIDING NEAR BY

- 24x7 Security
- Children Play Area
- Shopping Complex
- Sewage Treatment Plant
- Solid Waste Management
- Situated on 60'ft Wide Road
- Lush Green Gardens
- Recycling of Grey Water & Dual Plumbing Water Supply System




ANADI VILLAS
 • A HIGHER QUALITY OF LIVING •

A RESIDENTIAL PLOTTED PROJECT

ABOUT THE PROJECT

Anadi Villas is a residential plotted project. Here we provide an opportunity to customers to first own a residential plot and construct dwelling units (2/3/4/5 BHK). The financial institutions also allow individuals to get loans availed for purchase of plot first and then loan for construction of house (P+C Model).

COMFORT.
CONVENIENCE.
CUSTOMIZATION.?

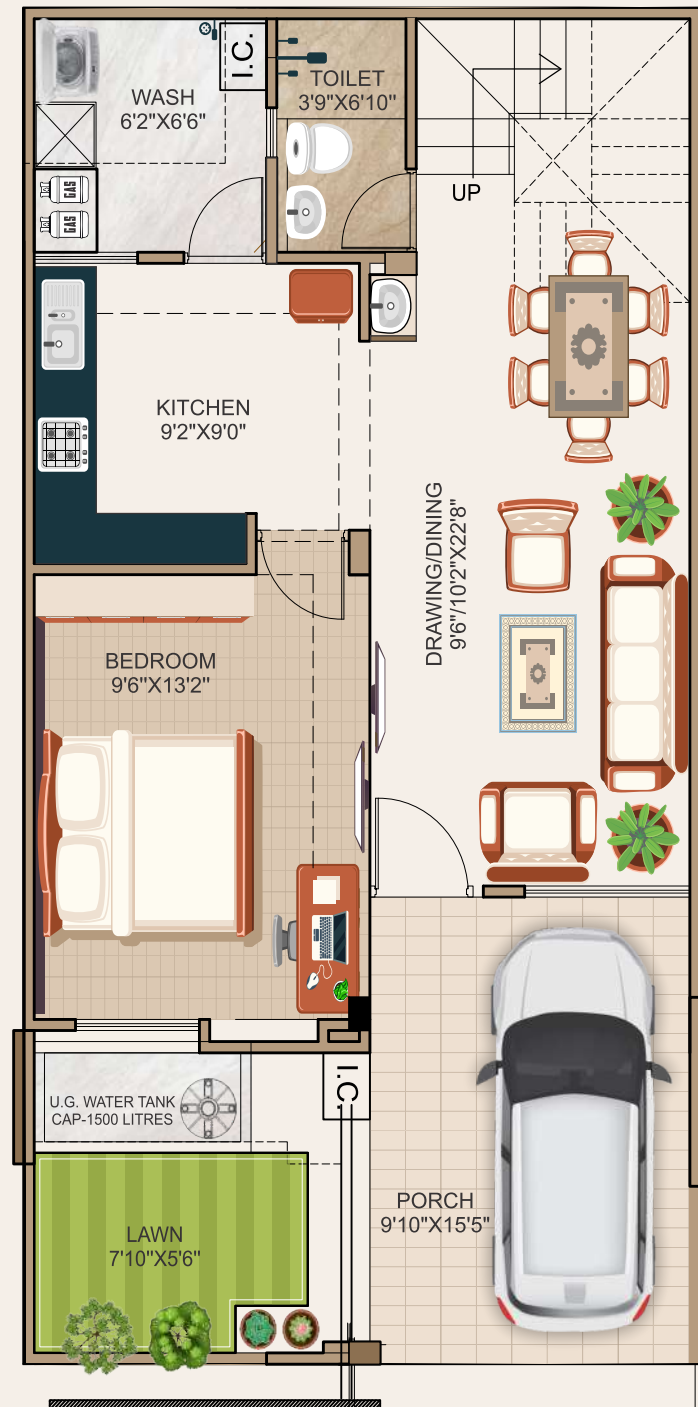
If that's on your mind,
then ANADI VILLAS is the
right place for you.



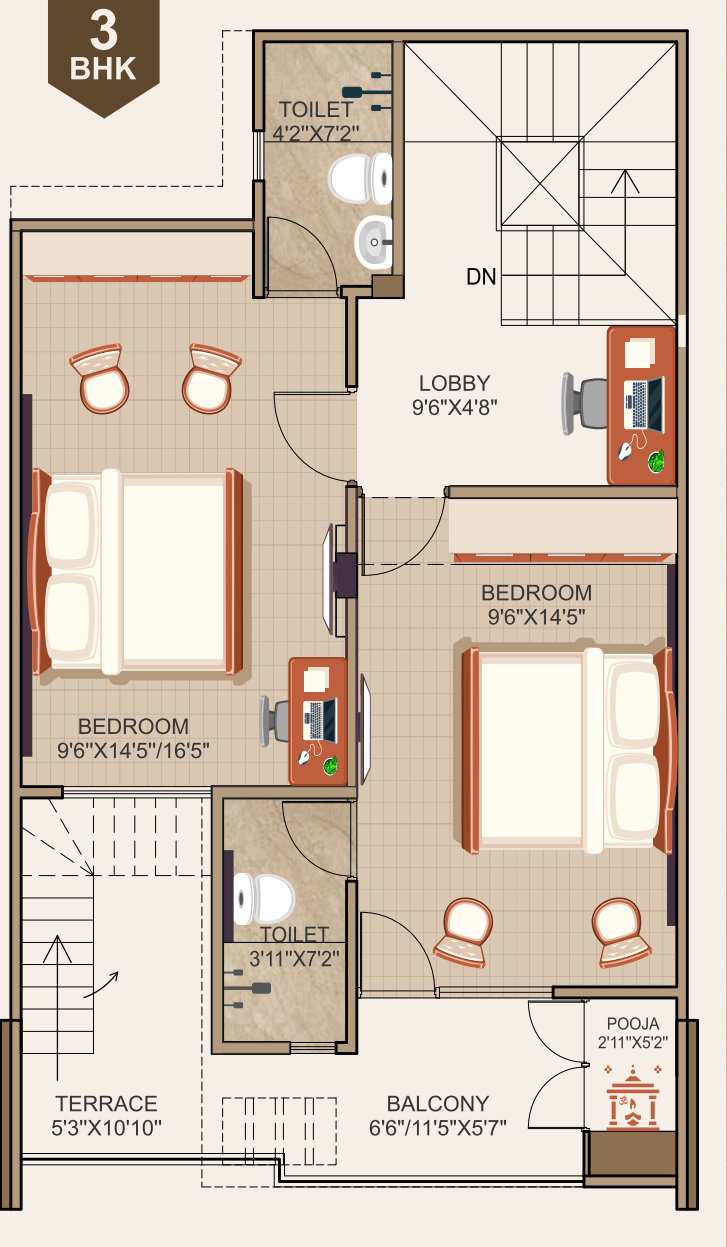
ANADI VILLAS
• A HIGHER QUALITY OF LIVING •



CHOICE OF FLOOR PLANS

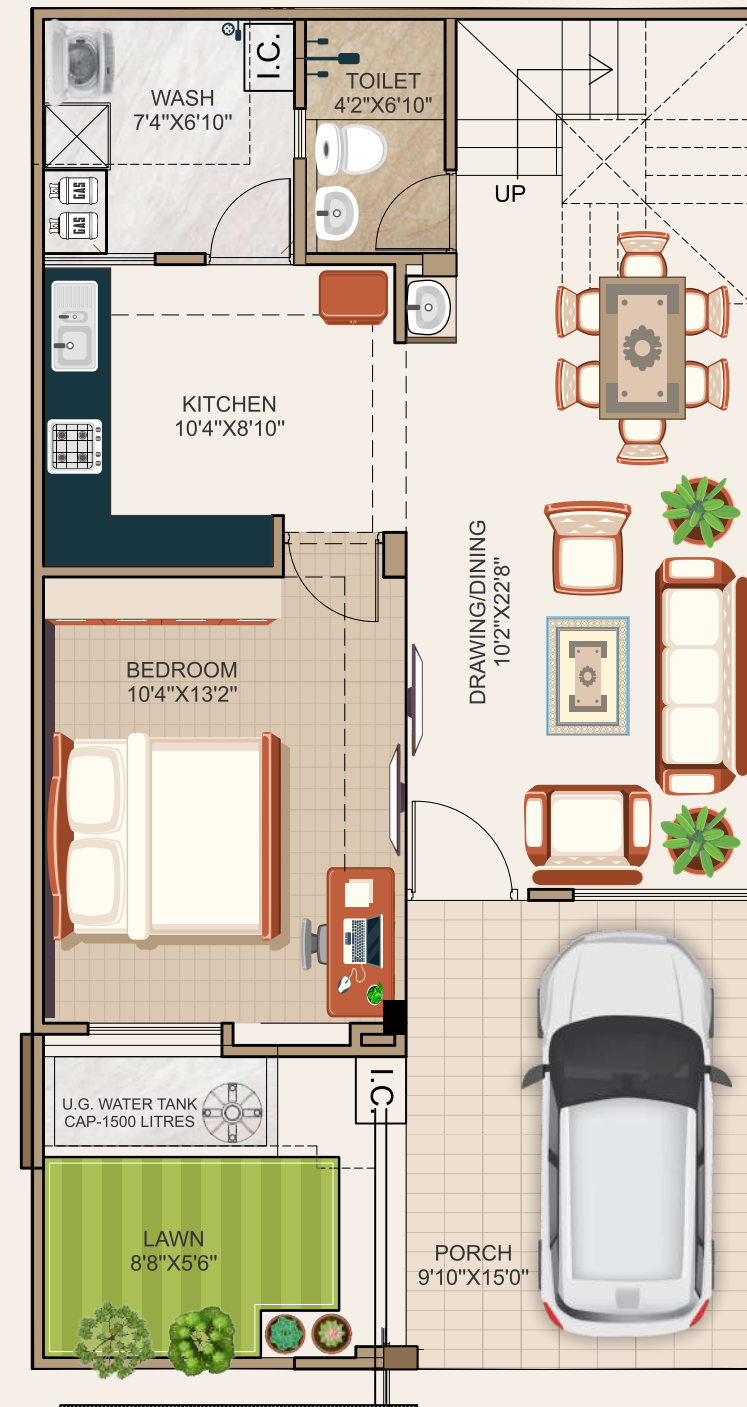


Ground Floor Plan - (652.95 Sqft)

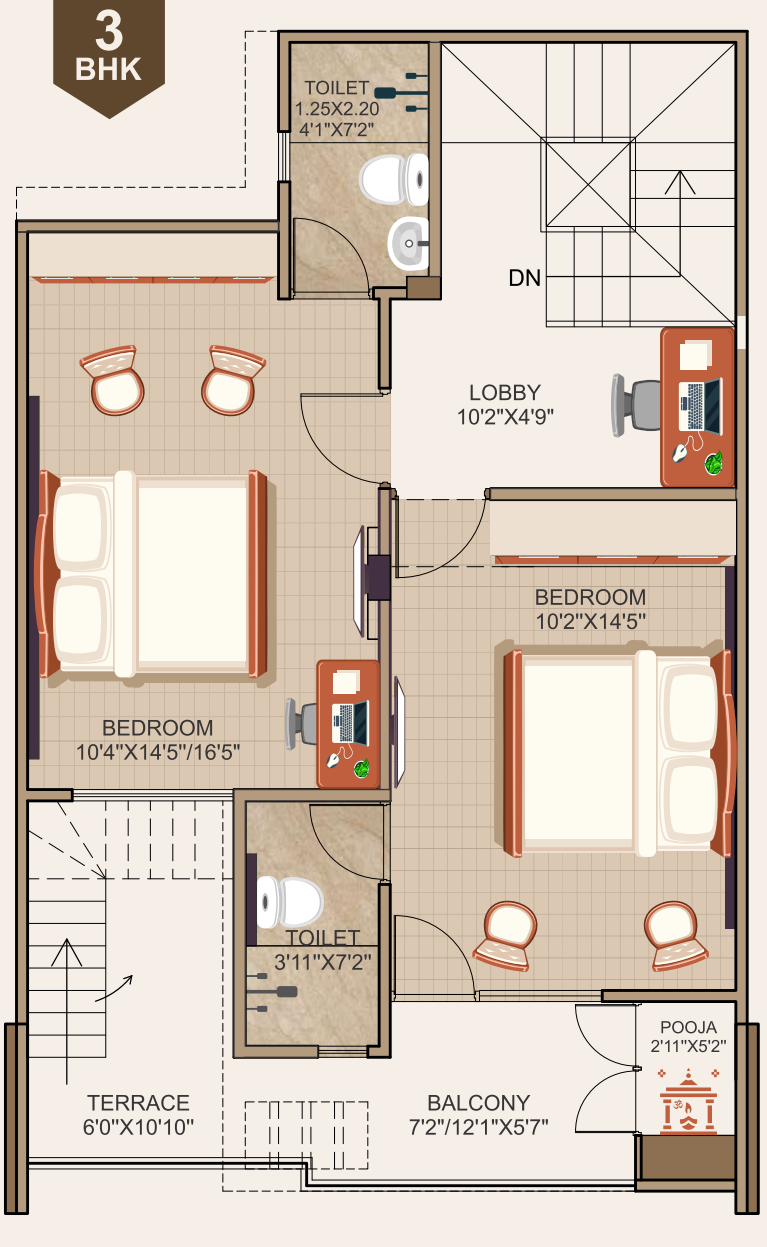


First Floor Plan - (590.20 Sqft)

- Plot Size - 20' X 40'
- Plot Area - 801.05 Sqft
- Total Constructed Area - 1243.15 Sqft



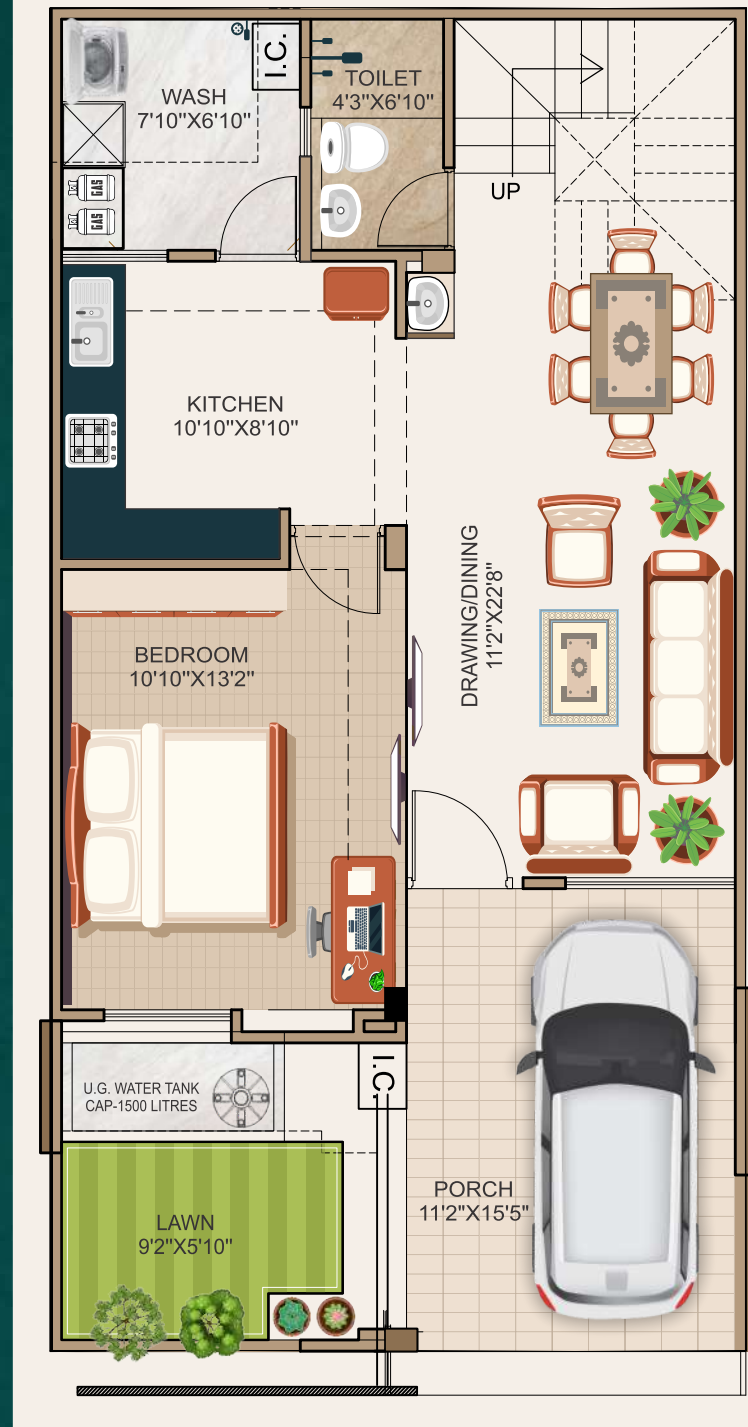
Ground Floor Plan - (700 Sqft)



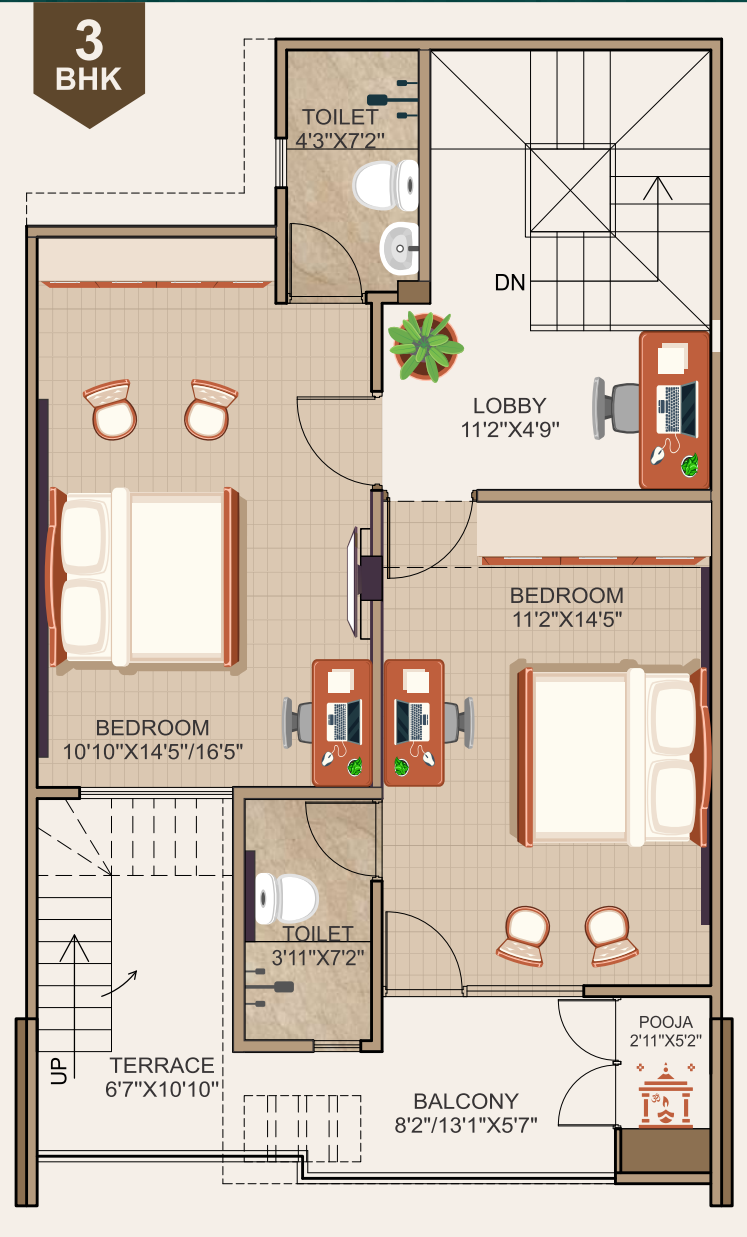
First Floor Plan - (624.75 Sqft)

- Plot Size - 21'6" X 40'
- Plot Area - 860.15 Sqft
- Total Constructed Area - 1324.75 Sqft

CHOICE OF FLOOR PLANS

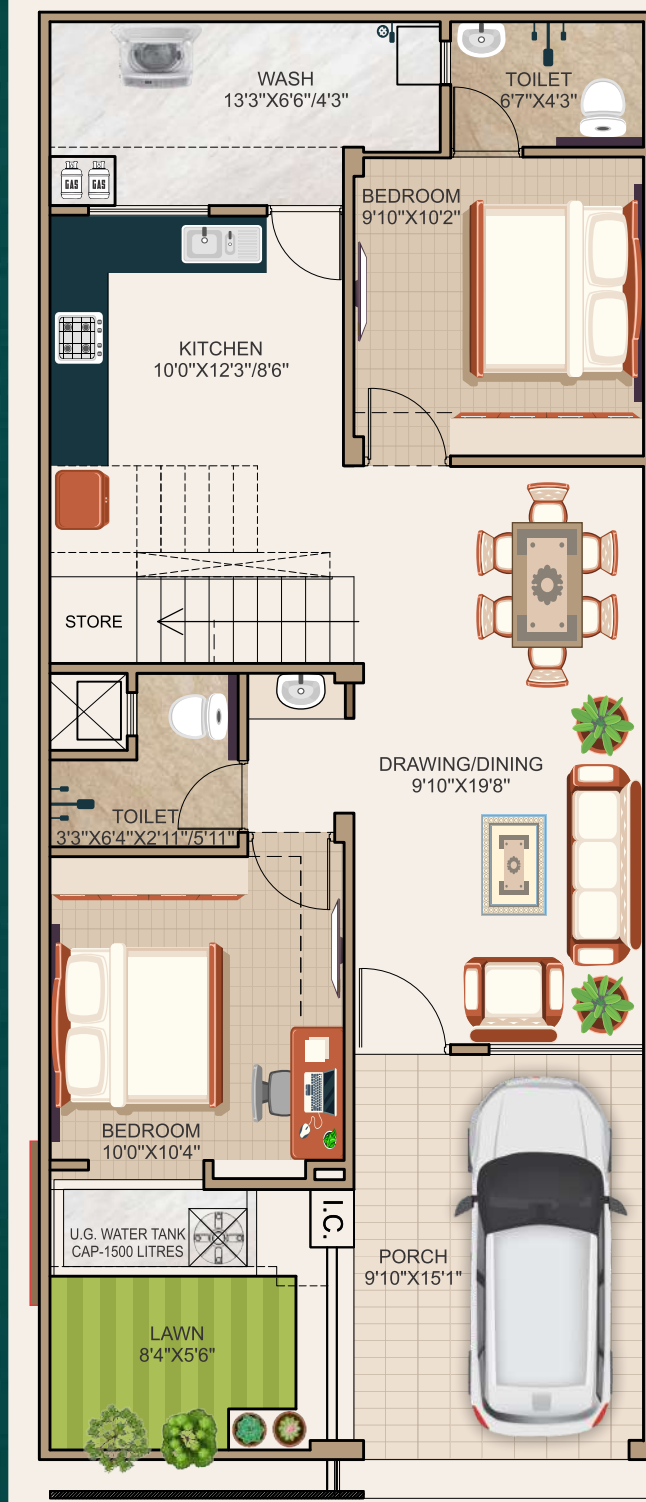


Ground Floor Plan - (760.15 Sqft)

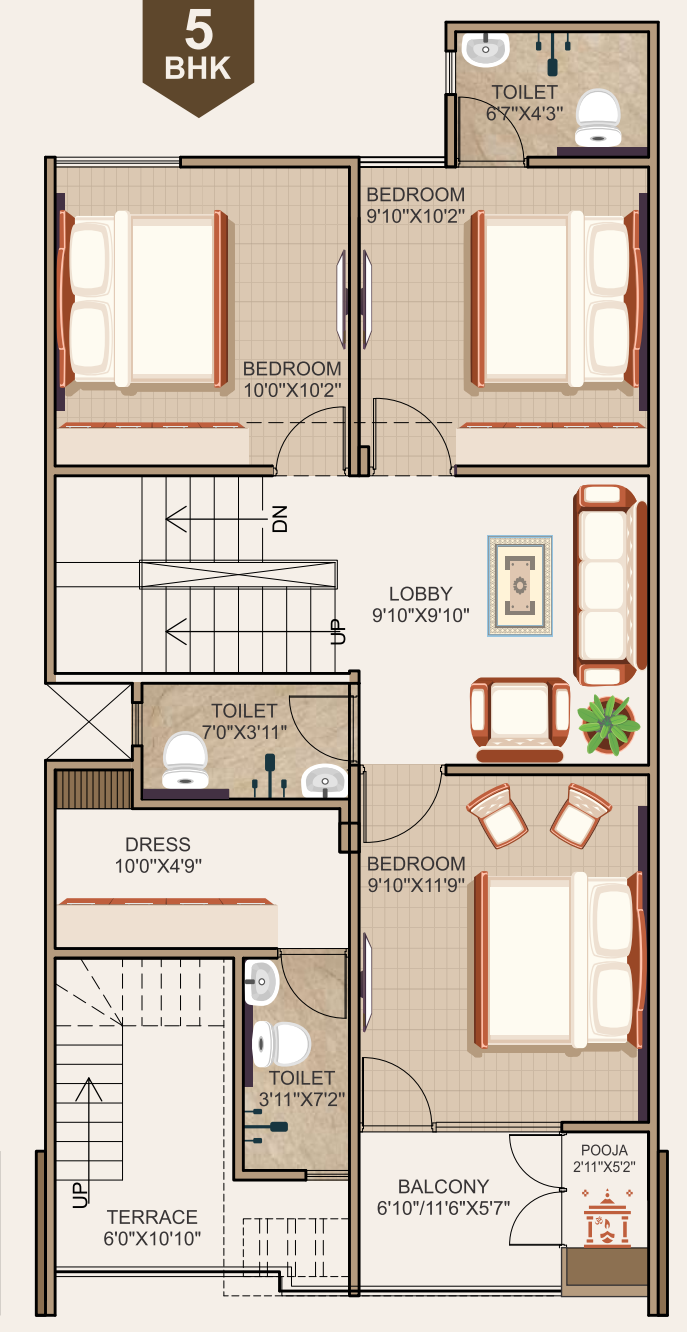


3 BHK
First Floor Plan - (666.83 Sqft)

- Plot Size - 23'0" X 40'
- Plot Area - 919.25 Sqft
- Total Constructed Area - 1426.98 Sqft



5 BHK
Ground Floor Plan - (827.32 Sqft)



5 BHK
First Floor Plan - (766.40 Sqft)

- Plot Size - 20'10" X 49'2"
- Plot Area - 1025.27 Sqft
- Total Constructed Area - 1593.72 Sqft

ABOUT THE GROUP

With an experience of more than 25+ years in the Construction Industry, **M/s Draupadi Constructions** has become a leading name. We have timely delivered more than 10 projects providing affordable houses to around 1500 families. We have taken a guiding role in providing construction services with an uncompromised commitment to Quality, Health, Safety, and Environment.

We accomplished this based on mutual trust, transparency, accountability, and discipline.

We are proud of our achievements and with your support, we will continue to enhance our commitment and capabilities in the construction industry with integrity & strive for supreme business excellence.



COMPLETED PROJECTS

- | | |
|-----------------------------|-------------------------|
| 1 - SHIVLOK PHASE 1 | 10 - RUDRA APARTMENTS |
| 2 - SHIVLOK PHASE 2 | 11 - SHIVLOK ARCADE |
| 3 - SHIVLOK PHASE 3 | 12 - DINDAYAL PARISAR |
| 4 - SHIVLOK PHASE 3 (EXT) | 13 - ASHUTOSH PARISAR |
| 5 - SHIVLOK PHASE 4 | 14 - GIRISH APARTMENTS |
| 6 - SHIVLOK PHASE 5 | 15 - ISHAAN APARTMENTS |
| 7 - SHIVLOK GREENS | 16 - SHIKHAR APARTMENTS |
| 8 - SHIVLOK HEIGHTS BLOCK 3 | 17 - SHIVLOK TOWER |
| 9 - MANSAROVAR ARCADE | 18 - KAILASH APARTMENTS |

ONGOING PROJECTS

Shivlok Heights
1,2,3 BHK FLATS & SHOPS

Shivlok Greens
EXTENSION

Shashwat
- APARTMENTS -

Durkar
ARCADE